



**Stephens**   
CONCRETE PLANTS • Tompkinsville, KY

# EAGLE

**STATIONARY AND PORTABLE CONCRETE PLANTS**



# Cement Silo



Stephens Mfg. is a member of the (Concrete Plant Manufacturers Bureau). Each plant we manufacture has a CPMB rating plate to guarantee that it meets the specific tions for that size plant.

Each plant we manufacture is standard with one compartment silo.

- 1,405 cubic feet - maximum: 350 BBL.
- 4" diameter fill line with camlock coupling.
- Inspection hatch on top of silo.
- Cleanout hatches located above screw conveyors for inspection and cleaning out. Emergency slide gates on cones of silo.
- Outside ladder and safety CAGE, with toe board and pipe handrails around top of silo.
- SOS-1020 cartridge type dust collector on silo (450 sq. ft) three cartridges that can be replaced from outside the unit. Wired in liquid tight flexible conduit from vent on top of silo to junction box on plant power panel.
- One (1) low level bin level indicator with lighted signal in low lights control box, wired in liquid tight metallic flexible conduit.

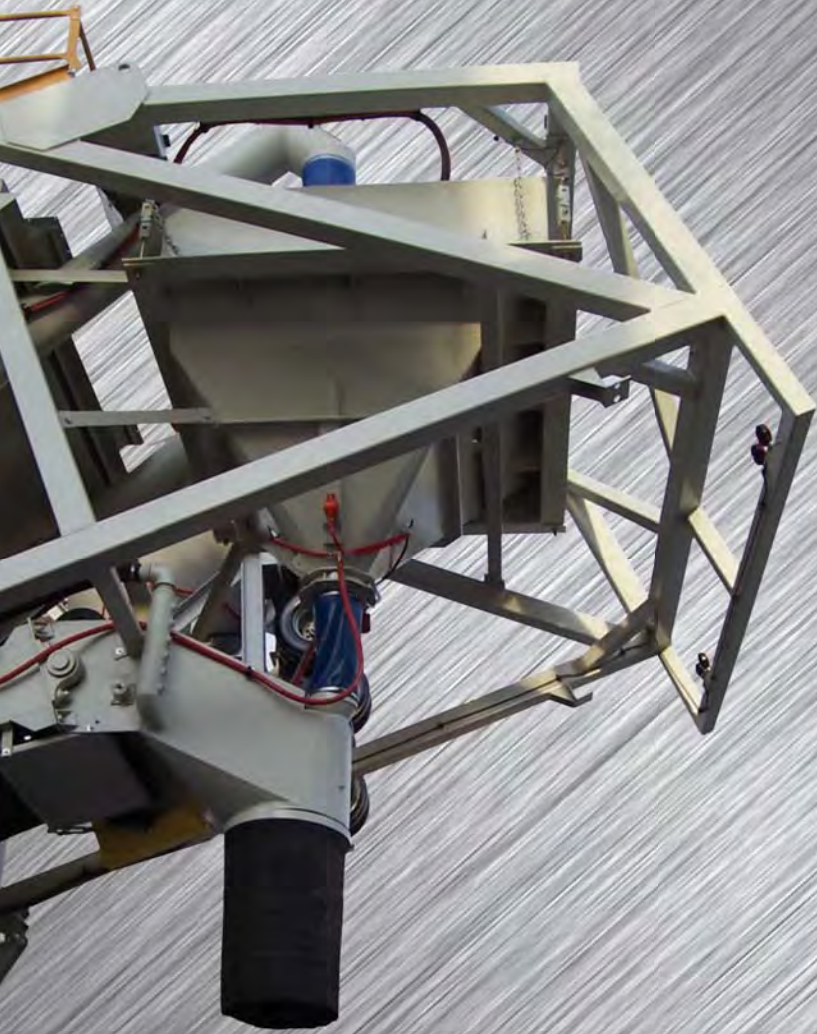
## Optional two compartment silo:

- 2,000 cubic feet - maximum: 500 BBL, or 3,200 cubic feet maximum 800 BBL.
- One SOS-1020x2 silo dust collector on top of silo.

Optional dust collectors and silo overfill alarms available. Contact us for more information.

EAGLE

# Cement Batcher



- **14 Yard cement batcher** 140 cu. ft. with 10,000 LB lever systems, one "S" type load cell (100' cable). 0 - 10 VDC digital readout, with inching gate on batcher and inspection hatch on top of batcher.
- **10" butterfly valve and actuator.**
- **Cement is gravity fed into truck.**
- **Hanger lugs for hanging test weights, with safety chains to secure batcher.**
- SV-20 Batcher vent

Optional limit switch available. Contact us for more information.

## Screw Conveyor: Standard

- Two (2) 10" diameter's screws 2835 lb./minute each.
- Two (2) 25 hp Std. 3 phase TEFC motors 230/460, 10" screws with 25 hp motors, 3780 lb./minute each, (**screw rpm will not be adjustable**).
- Stephens screw conveyors are rated by the CPMB (Concrete Plant Manufacturers Bureau) for accurate discharge rates.

Optional items include:

12" with 40 hp motors  
6000Lb/minute each

With reducer and direct drive



# Aggregate Batcher

- 12 yard with 40,000 Lbs lever system with one "s" type load cell and 0-10 VDC digital readout. 580-cubic feet capacity at water level.
- Two discharge openings in batcher with one (1) extra long double acting clamshell gates, under both openings. **Gear type** gate with (6)  $\frac{3}{4}$ " teeth per gate. Gate has **permanently lubricated bronze bushing**. Gate will be actuated by two 5" air cylinders, with fl -restrictors mounted in two (2) solenoids.
- **Hanger lugs for handling test weights.**

Optional items available: Limit Switches and A/R liners



# Transfer Conveyor & Electrical System

- 30" x 44'6" channel frame transfer conveyor
- Wiper replaceable poly-urethane blade and tail pulley guard.
- 20 HP 3 phase TEFC motor 230/460 volts.
- Stephens' conveyors are rated by the CPMB (Concrete Plant Manufacturers Bureau) for accurate discharge rates.
- Conveyor vulcanized at the factory

**Optional 36" belt available.**

## Electrical Systems

- **Plant power panel: 200 AMP** Main disconnect mounted on steel panel with protective top cover and lockable doors. Junction box includes pre-wired terminal strips for electrical wiring from all types of motors and starters. All units are wired in liquid tight flexible metallic conduit. Each motor is individually protected. Power panel is mounted on aggregate batcher section, away from moving conveyor components. Panel will be third party UL approved when it leaves the factory.

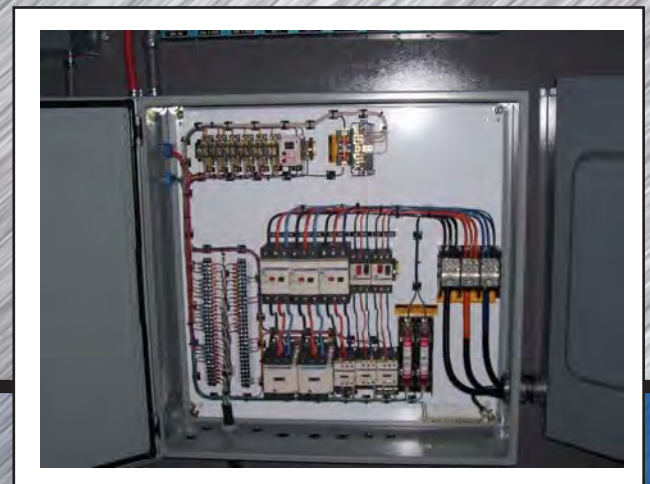
### Voltage

**460 volts 3 phase with maximum of  
a 200 AMP disconnect**

**If 230 volts 3 phase single phase or large  
disconnect desired, please consult factory.**

- Push button control box is included. Control panel includes all necessary push button controls for Stephens Mfg. supplied equipment. If controls are required for existing equipment or equipment from other manufacturers, please consult factory. Push button control box includes 110' of control cable from power panel to 110-volt control box with plug in receptacle. **Note: All controls 110V.**

**Optional items available include:  
400 and 600 AMP Disconnect**

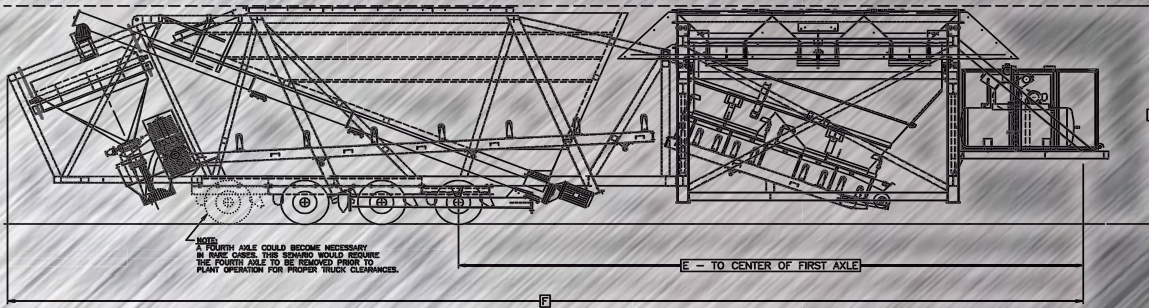


# Aggregate Storage Bins

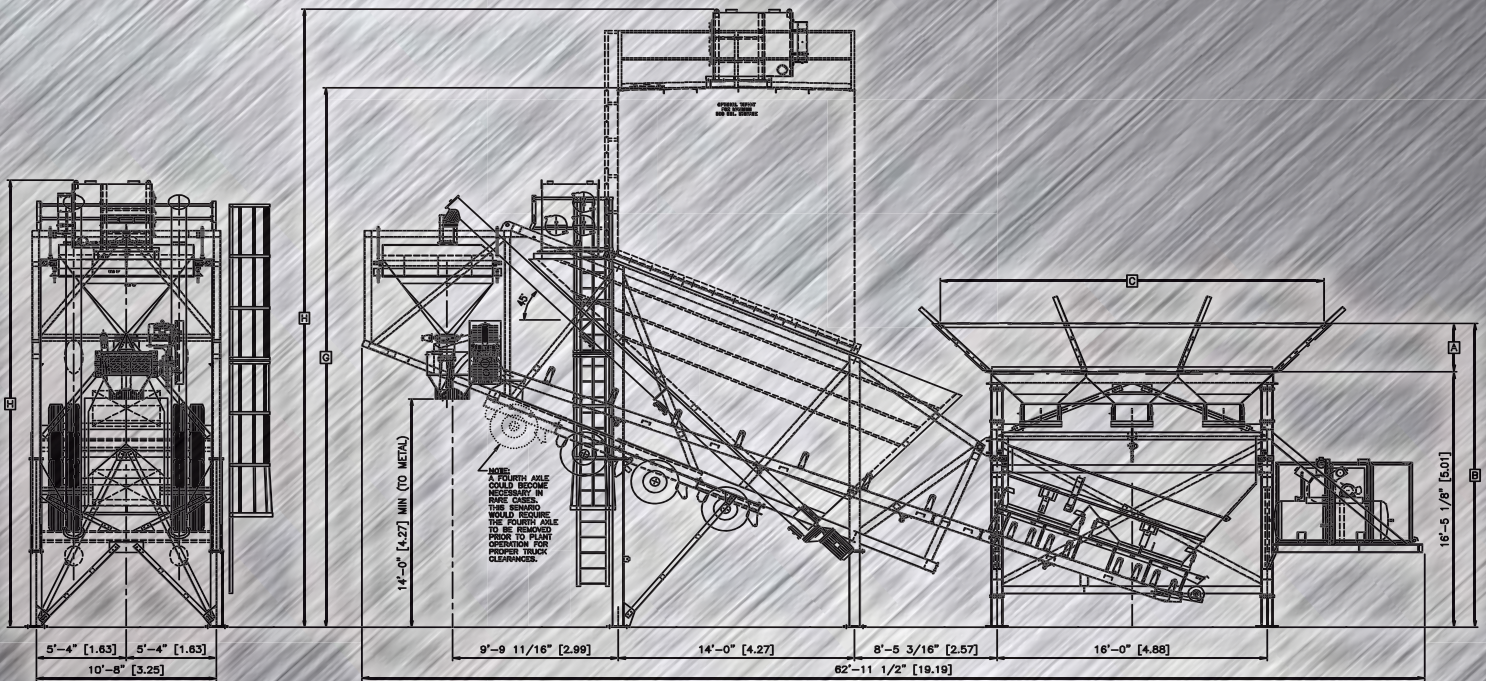
- 1400 cu. ft. 70 ton—51 cubic yards—3 compartment overhead storage bins.
- 2' tall bolt on extension legs, to mount between batcher and bins.
- 10 yards of material may be discharged from any two (2) gates. Consult factory if customer wishes to discharge 10 yards of material from front two (2) gates (on four compartment bin consult factory.)
- Hinged fold down sides for easy transportation. (Note: It may be to customer's advantage to have weld up bins to reduce crane and labor charges in the field)
- Two clam gates are included on each compartment. Gear type gates with (6)  $\frac{3}{4}$ " teeth on each gear. Each gate has permanently lubricated bronze bushings.
- 5" diameter air cylinders with electric solenoid.
- Heap plates.
- All air devices plumbed with Red & Blue rubber air hoses.

**Optional: A 4th Compartment and up to 200 ton capacities and A/R liners.**





**EAGLE MOBILE - TOWING POSITION**



**70 TON - 200 TON**

**EAGLE MOBILE CONCRETE PLANT DIMENSIONS CHART**

DESCRIPTION	UNITS	A	B	C	D	E	F	G	H	CAPACITIES CU YARDS CU METERS
70 TON AGG. BIN	STD.	3'-1 1/2"	19'-6 5/8"	22'-8 3/4"	14'-0"	---	---	---	---	51.85
	METRIC	.95 M	5.96 M	6.93 M	4.27 M	---	---	---	---	39.6
100 TON AGG. BIN	STD.	5'-1 1/2"	21'-6 5/8"	26'-8 3/4"	14'-0"	---	---	---	---	74.07
	METRIC	1.56 M	6.57 M	8.15 M	4.27 M	---	---	---	---	56.0
120 TON AGG. BIN	STD.	6'-1 1/2"	22'-6 5/8"	28'-8 3/4"	14'-0"	---	---	---	---	88.8
	METRIC	1.85 M	6.87 M	8.76 M	4.27 M	---	---	---	---	67.8
150 TON AGG. BIN	STD.	8'-2"	24'-7 1/8"	28'-0"	14'-0"	---	---	---	---	111.11
	METRIC	2.49 M	7.50 M	8.53 M	4.27 M	---	---	---	---	84.9
200 TON AGG. BIN	STD.	11'-4"	27'-9 1/8"	28'-0"	14'-0"	---	---	---	---	148.1
	METRIC	3.45 M	8.46 M	8.53 M	4.27 M	---	---	---	---	113.2
350 BARREL CEM. SILO	STD.	---	---	---	---	36'-11 7/8"	63'-8 1/8"	23'-8"	31'-6 3/4"	51.85
	METRIC	---	---	---	---	11.28 M	19.41 M	7.21 M	9.62 M	39.64
500 BARREL CEM. SILO	STD.	---	---	---	---	36'-11 7/8"	63'-8 1/8"	26'-2"	34'-0 1/4"	74.07
	METRIC	---	---	---	---	11.28 M	19.41 M	7.98 M	10.37 M	56.63
800 BARREL CEM. SILO	STD.	---	---	---	---	36'-11 7/8"	63'-8 1/8"	34'-9 1/4"	42'-7 1/2"	118.52
	METRIC	---	---	---	---	11.28 M	19.41 M	10.6 M	12.99 M	90.62

NOTE: TO CONTINUALLY UPDATE AND IMPROVE OUR PRODUCT WE RESERVE THE RIGHT TO AMMEND OUR STANDARD SPECIFICATIONS WITHOUT NOTICE.



Proud  
Members of



**Stephens**

**Stephens**  
CONCRETE PLANTS • Tompkinsville, KY



## Why a Stephens?

- Owned by Stephens family since 1957
- Reputation of honest, reliable and second to none sales and service
- In-house CNC/Machine shop
- Certified in-house scales to keep load cell size and quantity down
- Simple and easy to service and maintain, features standard off the shelf parts
- Each plant is designed for your seismic requirements



Jamieson Equipment Company  
[www.jamiesonequipment.com](http://www.jamiesonequipment.com)  
toll free 800.875.0280